

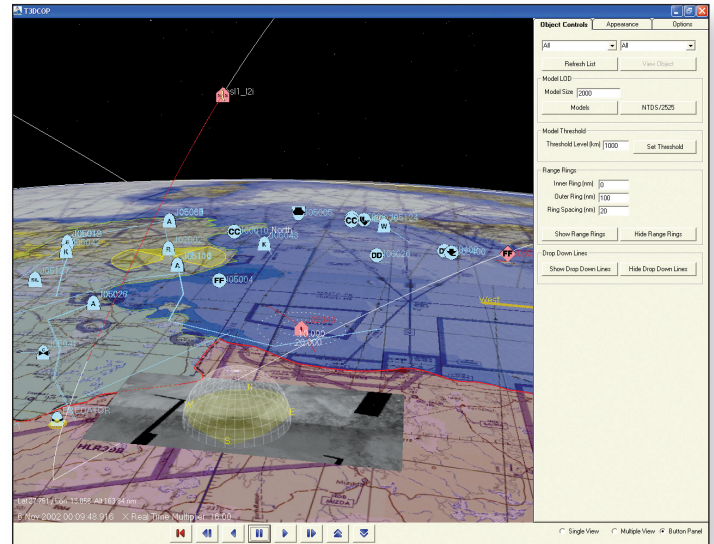
stk Engine

Deploy custom applications that incorporate **PROVEN AGI technology.**

STK Engine empowers developers and engineers with tools to build custom applications that cater to the end user's functionality requirements. Developers can create their own interface—or container application—customizing mouse movements, keyboard events, and graphical user interfaces (GUIs) to meet specific mission or user needs. Embedding AGI technology within COM-compliant applications integrates workflows; reduces cost and maintenance expenses; and facilitates easy deployment.

STK Engine container applications can be built in any Microsoft-COM-compatible environment. Developers are able to use programming languages (C, C++, C#, J#), scripting languages (VBScript, JavaScript, Perl), or HTML to build their interface with an MFC (Microsoft Foundation Class), .NET, or JAVA framework. Applications may also be embedded in any program that supports ActiveX controls, such as Word, Excel, Outlook, and PowerPoint, to create powerful automation tools. Additionally, the STK Engine provides support for UNIX development environments.

STK Engine applications employ AGI's algorithms for: sensor modeling and display; terrain analysis; multiple standard time and coordinate systems; inter-visibility calculations; 2-D and 3-D coverage analysis; and user-defined vector. Users can easily incorporate globes or maps from global Earth imagery and terrain.



STK Engine converts or directly reads standard formats such as:

- Imagery (CADRG, ADRG, NITF, GeoTIFF, CIB)
- Terrain DTED
- GIS data
- User-defined levels of detail
- Global 3-D elevation data

Developers can extend the analytical range of their application by purchasing additional functionality for communications link analysis, radar analysis, trajectory design, dynamic coverage, attitude analysis, and conjunction analysis.

The STK Engine Software Development Kit (SDK) includes tutorials and documentation that walks users through example applications in a variety of programming and scripting languages. The SDK is free with STK Basic and can be downloaded today from the agi developer network (ADN), adn.agi.com. Also available on ADN is our free Custom Application Framework that speeds development time by providing an add-in structure that allows for custom workflows along with standard functionality common to many STK Engine applications.

For more information, please contact AGI at 1.800.220.4785 or 1.610.981.8000, or explore www.agi.com/engine.

